

Psychology in ACTION

NOV
29
2024

Psychology in Action

For A level and IB students

Join us for an exciting day of informative discussions, interactive sessions and inspirational stories that will give your students real insight into psychology beyond the classroom. Our experienced speakers will deliver five engaging sessions that examine the theories and applications of psychology in the modern world.

The day will also include a special session on examination success designed to provide students with the tools that they need to excel. With polls and quizzes throughout the day and plenty of opportunities to ask the scientists questions, this event is a must for KS5 (and keen KS4) psychology students! Book now and let us help your students to realise their potential and discover the impact that they can have on the world.

More speakers for this exciting event will be announced soon!

- 'Mad or Bad' - the work of a Forensic Psychologist
- How to engineer an extreme emotion
- How does the human brain develop? The role of size and shape.



Emmanuel Centre, London,
London,
SW1P 3DW



Venue: £25.50 +VAT *

Plus one COMPLIMENTARY staff ticket per 10 students.

*VAT may be reclaimable. Please check with your finance department

Education in Action is the leading provider of inspirational, informative, Education in Action study days for A-level, IB, BTEC and GCSE students.

Award-winning, world-class speakers

Cutting-edge content

Thought-provoking demos and presentations

Examination hints, tips and guidance

Modestly priced to offer access to all

Complimentary staff ticket for every 10 students booked

Bookings can be amended up to 28 days before the event day

NOV
29
2024

Psychology in ACTION

'Mad or Bad' – the work of a Forensic Psychologist / Dee Anand – Forensic Psychologist

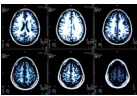


What does a forensic psychologist do? Do we really work with psychopaths? How do we get to do it? Are all criminals mad or bad, or both? As the saying goes – you don't have to be mad to work in this field... but does it help!? If you are interested in an exciting and challenging career then working as a forensic psychologist might be for you! This talk will tell you all about it!

Dee Anand has been a practising forensic psychologist for over 22 years. His areas of interest include mental health, personality functioning and psychopathy, sexual and violent offending. He has prepared specialist reports in civil and criminal cases across the UK and is co-author of the soon-to-be released book, 'How to Become a Forensic Psychologist.'

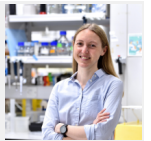


How does the human brain develop? The role of size and shape. / Katie Long – Kings College London



The human brain is responsible for a vast array of functions, from basic survival instincts to complex thoughts and emotions. But how do our brains develop and grow? How much does brain size and shape matter? And how do changes in brain development affect brain function?

I led a research team at King's College London that focuses on understanding how the human fetal brain develops to the right size and shape, and how the processes driving this development can go awry in developmental disorders.



How to engineer an extreme emotion / Brendan Walker – Founder Director of Thrill Laboratory and Professor of Creative Industries at Middlesex University



Discover exactly how far you need to be dropped in the pitch black for it to become terrifying; what effect it has on your body and mind; why you might find it so thrilling; and the role of visual illusion.

Brendan Walker is a Renaissance Showman – a technology-inspired performance artist described by The Times as “the world’s only Thrill Engineer”. He originally trained and worked as an aeronautical engineer, before practicing as a digital artist and ride designer. He is Professor of Creative Industries at Middlesex University and an established TV broadcaster.



Education in Action

Gilmoora House | 57-61 Mortimer Street | London W1W 8HS
020 3008 6441 | office@educationinaction.org.uk
www.educationinaction.org.uk